

Domain Department of Earth Sciences, College of Science
Major in Complex System Science

● Research theme

- ① Geologic study of volcanoes
- ② Petrologic study of volcanoes
- ③ Paleomagnetic study of volcanoes

①

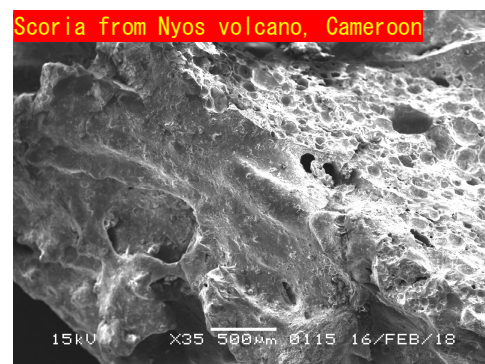
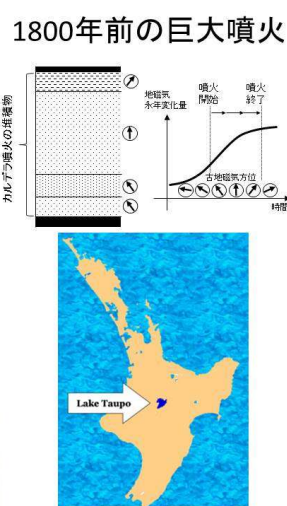
In order to reveal eruption histories and understand forming processes of world volcanoes, I am doing geological and volcanological surveys not only in Japan but New Zealand, Cameroon and Russia.

②

As part of and in addition to geological studies, I am doing microscopic observation and chemical analyses for volcanic rock samples to reveal the special and temporal changes of magma plumbing systems under the volcanoes.

③

We are developing a new method for high-resolution reconstruction of eruption processes (e.g. timescale, thermal history) on the basis of paleo-magnetic analysis.



Keyword
Specialized Field
Possible Technology of Cooperative research

Research Facility

E-mail

Volcano, Magma, Geology
Field Volcanology

Field work, Petrologic analysis, Paleo-magnetic analysis

Microscopes and thin section preparation, Grain size analysis, XRF, SEM-EDS, ICP-MS analyses and sample preparations, Paleo-magnetic analysis for volcanic rocks
takeshi.hasegawa.paul(at)vc.ibaraki.ac.jp